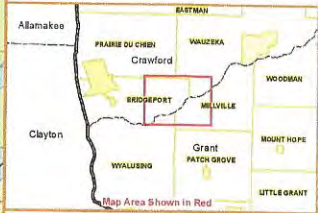
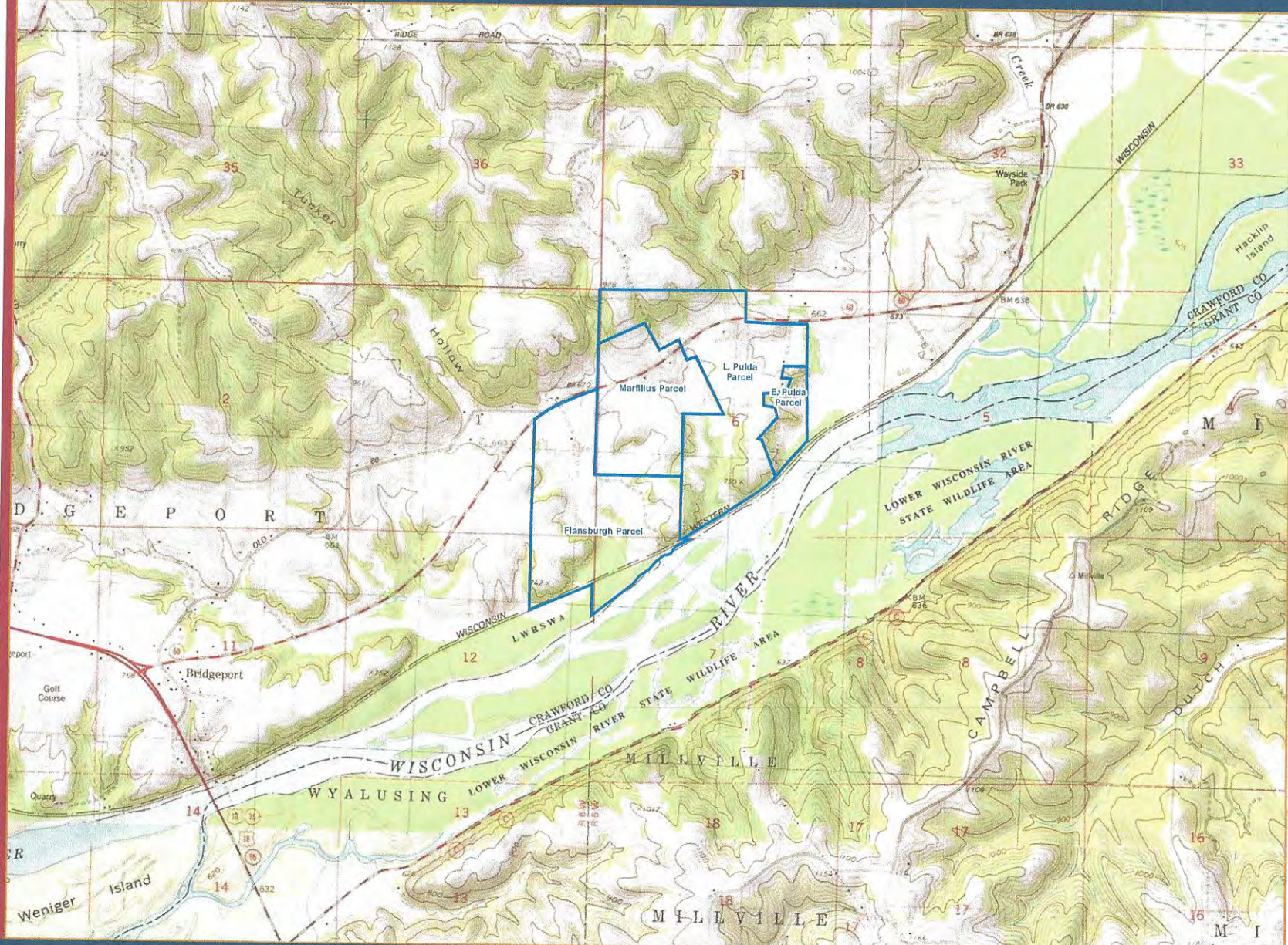


**Figure 1.
Project Location
and Topography
Proposed Pattison Sand Mine**



Location
T. of Bridgeport
Crawford Co., WI



Project Information
Project Number: 193701908
Last Modified: October 03, 2012

Legend
[Blue Outline] Approximate Project Location

Data Sources include: Santee; 7.5' Topographic Quadrangle

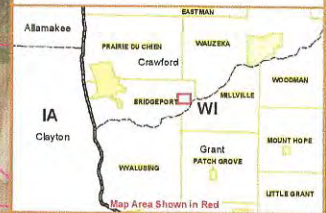


| Prepared By | Tracked | Date |
|-----------------|---------|------------|
| AMB | | 06/26/2012 |
| Legal Review By | | 07/19/2012 |
| Final Review By | SC | 07/19/2012 |

The information on this map has been compiled by Stantec staff from a variety of sources and is subject to change without notice. Stantec makes no representations or warranties, express or implied, as to accuracy, completeness, timeliness, or rights to the use of such information.

stantec.com

Figure 2b.
NRCS Soil Survey Data
 Proposed Pattison Sand Mine -
 Marfilus Parcel



Location
 S6, T6N, R5W
 T. of Bridgeport, Crawford Co., WI

0 200 400
 Feet

Project Information
 Project Number: 193701908
 Last Modified: October 03, 2012

- Legend**
- Approximate Project Location
 - NRCS Soil Survey Data
 - Hydric Soils
 - Poss. Hydric Inclusions
 - Non-Hydric Soils
 - DNR 24k Hydrography
 - Perennial Stream
 - Intermittent Stream
 - Waterbody

Data Sources Include: Stantec, NRCS, WDNR, and WDOT.
 Orthophotography: 2010 WRCC.

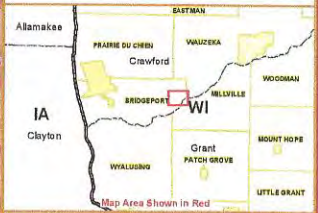


| Prepared By | Checked | Date |
|-------------|---------|------------|
| AMB | SF | 06/28/2012 |
| SF | SC | 07/19/2012 |
| SC | SC | 07/18/2012 |

The information on this map has been compiled by Stantec staff from a variety of sources and is subject to change without notice. Stantec makes no representations or warranties, express or implied, as to accuracy, completeness, timeliness, or rights to the use of such information.

stantec.com

Figure 2c.
NRCS Soil Survey Data
Proposed Pattison Sand Mine -
L. Pulda Parcel



Location
 S6, T6N, R5W
 T. of Bridgeport, Crawford Co., WI



Project Information
 Project Number: 193701908
 Last Modified: October 03, 2012

- Legend**
- Approximate Project Location
 - NRCS Soil Survey Data
 - Hydric Soils
 - Poss. Hydric Inclusions
 - Non-Hydric Soils
 - DNR 24k Hydrography
 - Perennial Stream
 - Intermittent Stream
 - Waterbody

Data Sources include Stantec, NRCS, WDNR, and WDOT.
 Orthorectified 2010 NRCS.

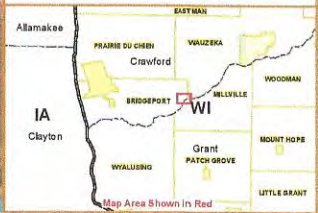


| Prepared by | IMB | Date | 08/28/2012 |
|------------------|-----|------------|------------|
| Field Technician | SC | 07/19/2012 | |
| Final Reviewer | | 07/19/2012 | |

The information on this map has been compiled by Stantec staff from a variety of sources and is subject to change without notice. Stantec makes no representations or warranties, express or implied, as to accuracy, completeness, timeliness, or rights to the use of such information.

stantec.com

Figure 2d.
NRCS Soil Survey Data
Proposed Pattison Sand Mine -
E. Pulda Parcel



Location
 S6, T6N, R5W
 T. of Bridgeport, Crawford Co., WI

0 200 400
 Feet

Project Information
 Project Number: 193701908
 Last Modified: October 03, 2012

- Legend**
- Approximate Project Location
 - NRCS Soil Survey Data
 - Hydric Soils
 - Poss. Hydric Inclusions
 - Non-Hydric Soils
 - DNR 24k Hydrography
 - Perennial Stream
 - Intermittent Stream
 - Waterbody

Data Sources include: Stantec, NRCS, WDNR, and WDOT.
 Orthophotography: 2010 WRCC.

| Prepared by | Check | Date |
|-------------|-------|------------|
| AMB | | 06/28/2012 |
| SF | | 07/19/2012 |
| SC | | 07/19/2012 |

The information on this map has been compiled by Stantec staff from a variety of sources and is subject to change without notice. Stantec makes no representations or warranties, express or implied, as to accuracy, completeness, timeliness, or rights to the use of such information.

stantec.com



Figure 3b.
Wisconsin Wetland Inventory
Aerially Delineated Wetlands
Proposed Pattison Sand Mine -
Marfilus Parcel



Location
 S6, T6N, R5W
 T. of Bridgeport, Crawford Co., WI

0 200 400
 Feet

Project Information
 Project Number: 183701908
 Last Modified: October 03, 2012

- Legend**
- Approximate Project Location
 - Proposed Mining Limits
 - Wisconsin Wetland Inventory
 - DNR 24k Hydrography
 - Perennial Stream
 - Intermittent Stream
 - Waterbody

Data Sources include: Stantec, WDNR, and WDOT.
 Ortho Photography: 2010 WRDC.

| | | |
|------------------|-----|------------|
| | | |
| Prepared by: | AMB | 06/28/2012 |
| Map Review by: | MP | 10/02/2012 |
| Final Review by: | TV | 10/03/2012 |

The information on this map has been compiled by Stantec staff from a variety of sources and is subject to change without notice. Stantec makes no representations or warranties, express or implied, as to accuracy, completeness, timeliness, or rights to the use of such information.

stantec.com



Figure 3c.
Wisconsin Wetland Inventory
Aerially Delineated Wetlands
Proposed Pattison Sand Mine -
L. Pulda Parcel



Location
 S6, T6N, R5W
 T. of Bridgeport, Crawford Co., WI



Project Information
 Project Number: 193701908
 Last Modified: October 03, 2012

- Legend**
- Approximate Project Location
 - 500ft OHWM Offset
 - Proposed Mining Limits
 - Wisconsin Wetland Inventory
 - DNR 24k Hydrography
 - Perennial Stream
 - Intermittent Stream
 - Waterbody

No aerially delineated wetlands in project location.
 Data Sources include: Stantec, VDOT, and VDOT.
 Orthophotography: 2010 WRCC.



| Prepared by | AMB | Date |
|-------------------|-----|------------|
| Field Reviewed by | MP | 10/03/2012 |
| Final Reviewed by | TV | 10/03/2012 |

The information on this map has been compiled by Stantec staff from a variety of sources and is subject to change without notice. Stantec makes no representations or warranties, express or implied, as to accuracy, completeness, timeliness, or fitness for the use of such information.

stantec.com



Figure 3d.
Wisconsin Wetland Inventory
Aerially Delineated Wetlands
Proposed Pattison Sand Mine -
E. Pulda Parcel



Location
 S6, T6N, R5W
 T. of Bridgeport, Crawford Co., WI



Project Information
 Project Number: 193701908
 Last Modified: October 03, 2012

- Legend**
- Approximate Project Location
 - 500ft OHWM Offset
 - Proposed Mining Limits
 - Aerially Delineated Wetland
 - Wisconsin Wetland Inventory
 - DNR 24k Hydrography
 - Perennial Stream
 - Intermittent Stream
 - Waterbody

Data Sources include: Stantec, WDNR, and WDOT.
 Orthophotography: 2010 WRCC.

| Prepared by | Checked by | Date |
|-------------|------------|------------|
| AMB | TV | 06/26/2012 |
| MP | TV | 10/03/2012 |
| TV | TV | 10/03/2012 |

The information on this map has been compiled by Stantec staff from a variety of sources and is subject to change without notice. Stantec makes no representations or warranties, express or implied, as to accuracy, completeness, timeliness, or rights to the use of such information.

stantec.com